

LSWX SERIES Outdoor Lighting

LSWX-13-26W-MCTP-PC-BR
LSWX-13-26W-MCTP-PC-BK
LSWX-13-26W-MCTP-PC-WH
POWER & CCT-ADJUSTABLE SMALL WALL PACK WITH PHOTOCELL

MCTP Multi Color Temperature & Multi Power/Wattage (Selectable)

Customer Name: _____

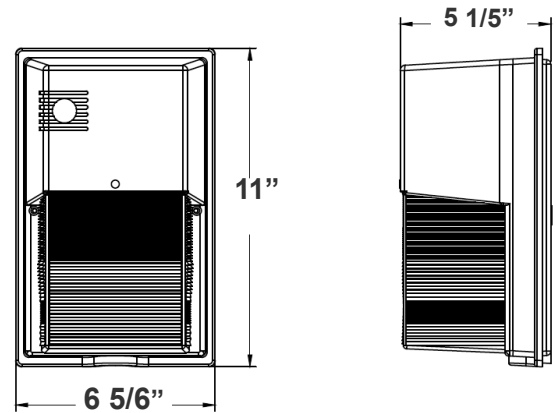
Project Name: _____

Note: _____

Type: _____



Avail. Finishes:



11"(L) x 6 5/6"(W) x 5 1/5"(H)

LED Non-Cutoff Wall Pack with Photocell is ideal for general site lighting, loading docks, doorway, pathway and parking areas.

Features

- Back plate: Die-cast aluminum
- Threaded 1/2" Knockout Provided on Top Section of the Back
- Polycarbonate Housing & Lens
- 7-Year Warranty
- Multi-Power (The switch is inside the fixture)

Technical Specifications

Electrical:

- Voltage: 120-277V AC 60Hz
- Wattage: 13W/20W/26W
- Power Factor: >0.90
- Efficacy: 162 LPW
- Includes Pre-wired Photo Electric Control (Dusk to Dawn Photocell), 120 Volt, Removable
- Photocell Response Time: Maximum 3 Seconds

Mechanical:

- Back plate: Aluminum LED board: High Conductive, Waterproof, Aging Resistance, Salt Mist Resistance
- Threaded 1/2" Knockout Provided on Top Section of the Back
- Polycarbonate Housing & Lens
- Non-Cutoff Optics Ideal for Maximum Light Distribution
- Operating Temperature: -4°F -104°F
- Wet Location
- 7-Year Warranty
- IP54

Lighting:

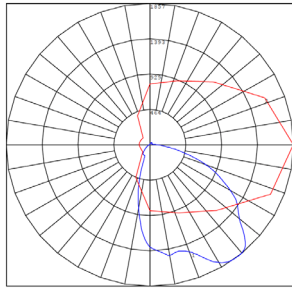
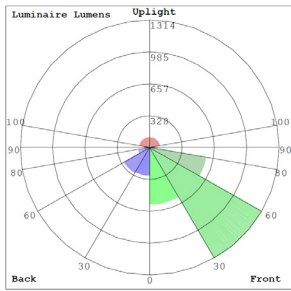
- LED Type/Brand: 2835LUMILEDS
- Front: Polycarbonate Lens and Housing
- Multi-Power (The switch is inside the fixture)
- Total Lumens: 4231LM Max.
- Color Temperatures: 3000K/4000K/5000K
- Color Rendering Index: CRI ≥ 70
- Beam Angle: 90° x 110°
- Rated life: 70,000 Hrs

Applications:

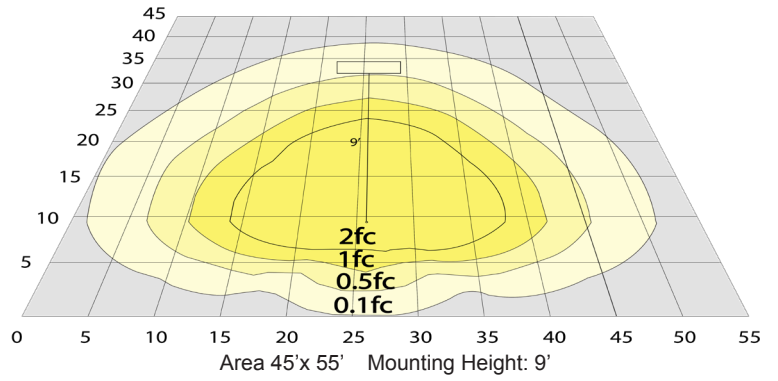
- Ideal for general site lighting, loading docks, doorway, pathway and parking areas.



Photometrics: LSWX-13-26W-MCTP-PC



BUD Rating: B1-U3-G1



Other Views:

LSWX-13-26W-MCTP-PC-BR



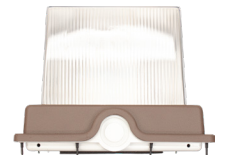
Side View



Front View

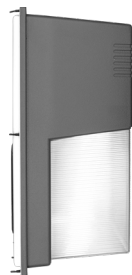


Back View



Bottom View

LSWX-13-26W-MCTP-PC-BK



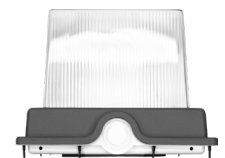
Side View



Front View



Back View



Bottom View

LSWX-13-26W-MCTP-PC-WH



Side View



Front View



Back View



Bottom View



Performance Table: LSWX-13-26W-MCTP-PC

MODEL NO.	Wattage	Voltage	Lumens	Color Temp.	BUG Rating	LPW
LSWX-13-26W-MCTP-PC-BR	13W	120~277V	4231LM	3000K	B1-U3-G1	162
LSWX-13-26W-MCTP-PC-BK	20W			4000K		
LSWX-13-26W-MCTP-PC-WH	26W			5000K		

Sample Ordering

Model	Min.	Max.Wattage	Color Temp.	Feature	Finishes
LSW	13	26	<input type="text"/>	PC	<input type="text"/>
			30K = 3000K 40K = 4000K 50K = 5000K	BR = BRONZE BK = BLACK WH = WHITE	

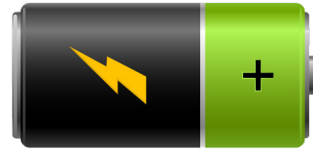
Factory-Installed Options:

- Blank = No Option For Accessories
- OPT-NOPC = REMOVE PHOTOCELL
- OPT-EM-LSW = INTERNAL EMERGENCY BATTERY BACK UP
- OPT-TRS-T20 = TAMPER RESISTANT SCREW
- OPT-SEN-SLPIR = EXTERNAL SECURITY LIGHT TYPE PIR MOTION SENSOR

FACTORY-INSTALLED OPTIONS:



OPT-SEN-SLPIR



OPT-EM-LSW

